



# AIR SEPARATOR

Tangential Air Separators: 2" - 24" without Strainer ASME

250 PSIG Working Pressure

## Construction

Body	ASME Approved Steel
Flanges	ASME 300 Lb

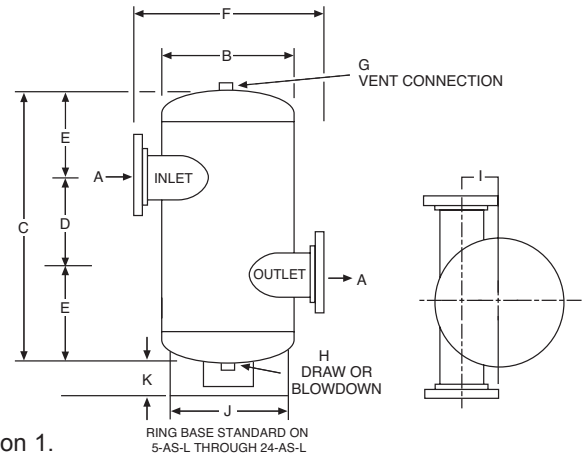
## Performance

Maximum Operating Temperature	350°F (176.7°C)*
Maximum Working Pressure	250 PSIG (17.2 bar)
Warranty	1 Year

## Application

- Creates a low velocity vortex that separates and removes entrained air from circulating water or anti-freeze.

- For use in closed, non-potable water systems.
- Designed and constructed per ASME Code Section VIII, Division 1.



## ASME Models

Model Number	Dimensions											Shipping Weight	
	A	B	C	D	E	F	G	H	I	J	K	Lbs	Kg
	In	In	In	In	In	In	In	In	In	In	In		
2-ASL	2	10	23	8	7½	17	¾	¾	3	-	-	65	29
2½-ASL	2½	10	23	8	7½	17	¾	¾	3	-	-	80	36
3-ASL	3	10	23	8	7½	17	¾	¾	3	-	-	90	41
4-ASL	4	12	25	10	7½	21	¾	¾	3½	-	-	105	48
5-ASL	5	16	34½	12	11¼	24	¾	¾	4¼	12¼	4⅝	280	127
6-ASL	6	18	41	14	13½	26	¾	¾	4¼	14	4⅝	350	159
8-ASL	8	24	52	18	17	32	¾	¾	5¾	16	4⅝	560	254
10-ASL	10	30	58	21	18½	40	¾	¾	7¼	24	4⅝	1120	508
12-ASL	12	36	68	26	21	46	¾	¾	7¾	30	12⅝	1460	662
14-ASL	14	42	87	30	28½	56	¾	¾	13	30	13⅝	2965	1345
16-ASL	16	48	90	32	29	64	3	3	15	42	12½	4175	1894
18-ASL	18	54	102	36	33	64	3	3	16	42	12⅝	5100	2313
20-ASL	20	60	100	30	35	70	3	3	19	45	6⅞	7300	3311
22-ASL	22	60	119	48	35½	70	3	3	18	45	7	8500	3856
24-ASL	24	72	131	43	44	82	3	3	22	45	8	9880	4481

\*Available at 375°F (189.4°C)

All dimensions and weights are approximate.

Job Name _____	Notes _____
Engineer _____	_____
Contractor _____	_____
P.O. No. _____	_____
Sales Rep. _____	_____
Model No. _____	_____

