



Amtrol'R Digital Control

The AMTROL'R Digital Control is the complete pump control for all well installations. Built with solid-state reliability, the AMTROL'R features an LED pressure display and integral pump protection. Installation is fast and easy thanks to familiar wiring terminals and conduit connections. Pressure adjustment is 8 times faster with push-button settings vs. traditional springs and screws. A pressure adjustment range from 10-99 psi allows replacement of all mechanical switches with one AMTROL'R model.



Features and Benefits

- ▲ Replaces mechanical switch with no wiring changes
- ▲ 115/230V compatible with automatic voltage sensing
- ▲ Easy UP/DOWN arrow settings for cut-in and cut-out
- ▲ One model fits all installations and pressure requirements
- ▲ Push-button pressure adjustment from 10-99 psi
- ▲ Differential adjustable from 10-55 psi
- ▲ Real-time digital readout eliminates pressure gauge
- ▲ Narrow differential produces constant pressure using existing pump and wiring
- ▲ Built-in diagnostics with audible alarm, visible error code and auto-restart:
 - Low Suction
 - Jet Pump Overheat
 - Rapid Cycle
 - Wiring Fault
 - Voltage protection

With features like these, it's obvious why the AMTROL'R is the modern control solution for today's well systems.



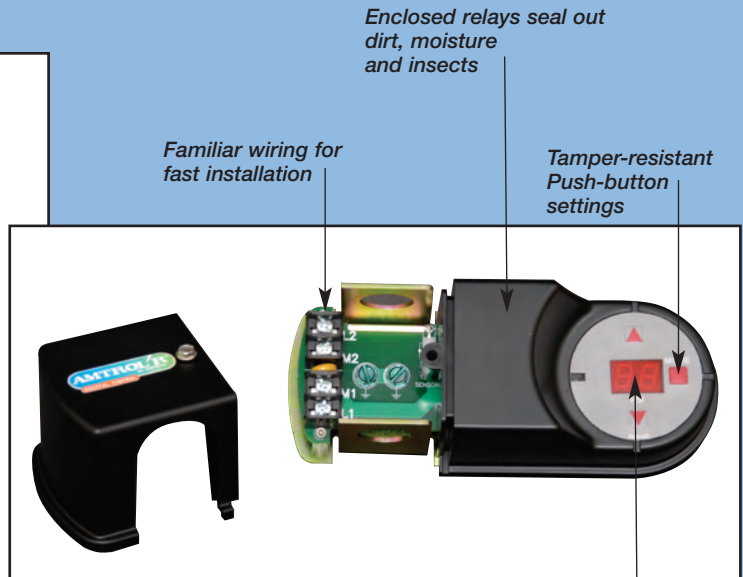
Call 401-884-6300 or
www.amtrol.com
for more information.

Amtrol'R Digital Control



Voltage	115/230 VAC
HP Rating	up to 2 hp
Pressure Range	10-99 psig
Differential Range	10-55 psig
Width	7 1/4"
Length	3"
Height	3 1/4"
Connection Port	1/4" NPTF

	DIGITAL CONTROL	Mechanical Switch
1. Easy installation	✓	✓
2. Easy setting (no tools required)	✓	✗
3. Quick time to adjust	✓	✗
4. UL listed	✓	✓
5. Error codes with audible alarm	✓	✗
6. Temperature option for thermal protection	✓	✗
7. 10 psi differential offers lower cost alternative to "constant pressure" systems	✓	✗
8. Digital pressure display	✓	✗
9. 115 VAC and 230 VAC operation	✓	✓
10. New technology, new look, greater performance	✓	✗
11. Springs, levers, 1940 s technology	✗	✓



www.amtrol.com

Corporate Headquarters
1400 Division Road, West Warwick, RI 02893 ☎ Tel. 401-884-6300 ☎ Fax 401-884-5276

AMTROL Canada, Ltd.
275 Shoemaker Street, Kitchener, Ontario N2E 3B3 ☎ Tel. 519-748-1138 ☎ Fax 519-748-4231



MC# 10043 07/05